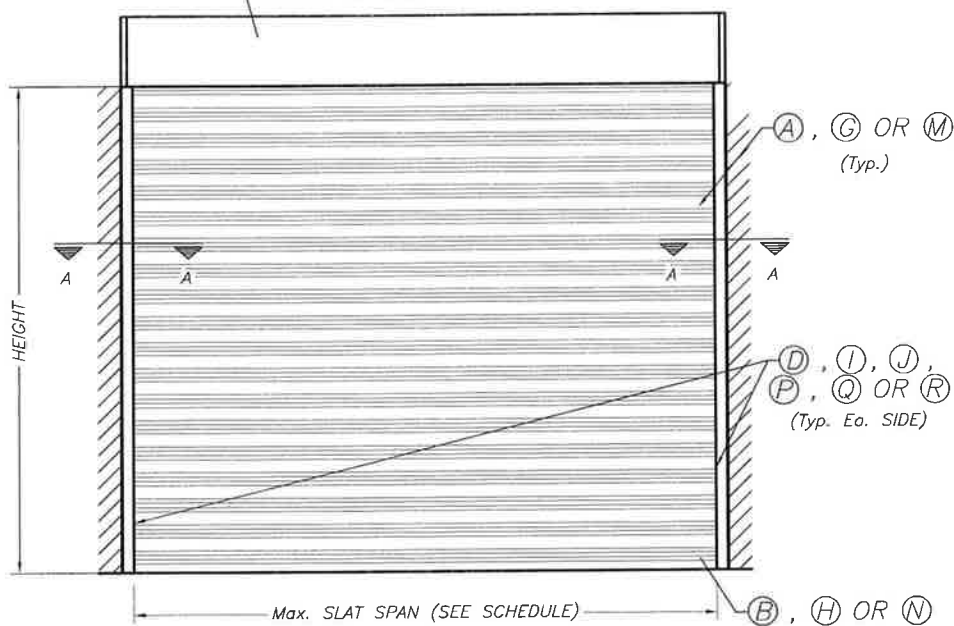
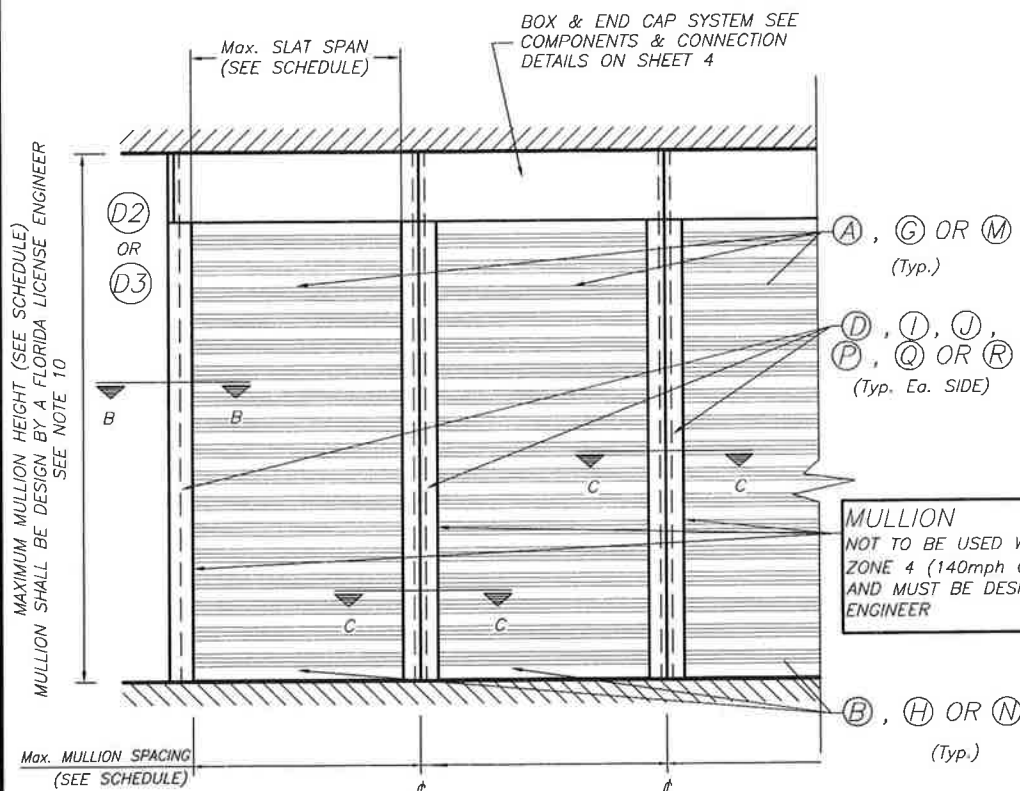


BOX & END CAP SYSTEM SEE COMPONENTS & CONNECTION DETAILS ON SHEET 4



TYPICAL SINGLE UNIT ELEVATION

NOTE: SEE SHEETS 2, 3 & 4 FOR COMPONENTS NOMENCLATURE.



TYPICAL MULTIPLE UNIT ELEVATION

NOTE: SEE SHEETS 2, 3 & 4 FOR COMPONENTS NOMENCLATURE.

NOTES:

(1) SEE SECTIONS ON SHEETS 6 & 8

NOT FOR USE WITHIN HIGH VELOCITY HURRICANE ZONE

GENERAL NOTES:

1. END RETAINERS (ROLL-UP SHUTTER) SHOWN ON THIS FLORIDA APPROVAL DOCUMENTS (F.A.D.) HAS BEEN VERIFIED TO COMPLY WITH THE FLORIDA BUILDING CODE 2010. DESIGN WIND LOADS WERE DETERMINED AS PER ASCE 7-10 AND THE ABOVE MENTIONED CODE, IN ORDER TO VERIFY THAT THE ALL COMPONENTS ON THIS FLORIDA APPROVAL DOCUMENTS WERE NOT OVER STRESSED TESTED, A 33% INCREASE IN ALLOWABLE STRESS FOR WIND LOADS WAS NOT USED IN THEIR CALCULATIONS. THE ADEQUACY OF THESE END RETAINERS FOR IMPACT AND FATIGUE MEETS THE REQUIREMENTS OF THE FLORIDA BUILDING CODE ABOVE MENTIONED AND ALSO WITH TEST PROTOCOLS FOR NON HIGH VELOCITY HURRICANE ZONES 2010, TAS-201, TAS-202 AND TAS-203, AS SHOWN ON THE TEST RESULTS PERFORMED BY A HURRICANE TESTING LABORATORY, LABS NUMBER 5539 (40mm), LAB NUMBER 5565 (55mm) AND LAB NUMBER 5248 (60mm).

2. ALL ALUMINUM EXTRUSIONS SHALL BE MADE OF ALLOYS AND TEMPERS, AS INDICATED ON SHEET 2 & 3 OF THIS DRAWING. THE THICKNESS OF ALL EXTRUSIONS SHALL BE AS SHOWN ON THIS DRAWING WITH STANDARD TOLERANCES IN ACCORDANCE WITH THE "ALUMINUM DESIGN MANUAL 2010 EDITION".

3. ALL SCREWS TO BE STAINLESS STEEL 304 OR 316 AISI SERIES OR CORROSION RESISTANT COATED CARBON STEEL AS PER DIN 50018 WITH 50 ksi YIELD POINT AND 90 ksi TENSILE STRENGTH.

4. BOLTS TO BE ALUMINUM ASSOCIATION 2024-T4 ALLOY AND TEMPER, ASTM A-307 GALVANIZED STEEL OR AISI 304 SERIES STAINLESS STEEL, WITH 36 ksi MINIMUM YIELD POINT.

5. ANCHORS TO WALL FOR SIDE RAILS CONNECTION AND CONNECTION BOX SHALL BE AS FOLLOWS:
TO EXISTING POURED CONCRETE (3140 psi Min.):
- 1/4" Ø TAPCON ANCHORS, AS MANUFACTURED BY ITW BUILDEX.
- 3/16" Ø TAPCON XL, AS MANUFACTURED BY ITW BUILDEX.

TO EXISTING CONCRETE BLOCK (FILL CELLS WITH GROUT).
- 1/4" Ø TAPCON ANCHORS, AS PER MANUFACTURED BY ITW BUILDEX.
- 3/16" Ø TAPCON XL, AS PER MANUFACTURED BY ITW BUILDEX.

NOTES:

5.1) MINIMUM EMBEDMENT OF ANCHORS INTO POURED CONCRETE IS 1 3/4". EMBEDMENT IS IN CONCRETE ONLY, NOT OTHER DIFFERENT MATERIAL.

5.2) IF ANY DECORATIVE MATERIAL IS ON THE WALL, ANCHORS SHALL BE LONG ENOUGH TO REACH THE REQUIRED EMBEDMENT INTO THE CONCRETE (1 3/4").

5.3) ANCHORS SHALL BE INSTALLED FOLLOWING ALL OF THE RECOMMENDATIONS AND SPECIFICATIONS OF THE ANCHOR'S MANUFACTURER.

5.4) ANCHORS REQUIRED FOR MULLION CONNECTIONS SHALL BE AS SPECIFIED ON APPLICABLE SECTIONS SHOWN ON SHEET 7. POWER BOLT ANCHORS TO BE AS MANUFACTURER BY POWERS FASTENING, INC.

6. IT SHALL BE THE RESPONSIBILITY OF THE CONTRACTOR TO VERIFY THE SOUNDNESS OF THE STRUCTURE WHERE END RETAINER IS TO BE ATTACHED TO INSURE PROPER ANCHORAGE. THE END RETAINER SHALL ONLY BE ATTACHED TO POURED CONCRETE OR GROUT FILLED CONCRETE BLOCK.

7. INSTALLER SHALL SEAL/CAULK ALL SHUTTER COMPONENT EDGES WHICH REMAIN IN CONTINUOUS CONTACT WITH THE BUILDING TO PREVENT WIND/RAIN INTRUSION.

8. END RETAINER MECHANISM NOT PART OF THIS APPROVAL, BUT SHALL BE CERTIFIED BY AN INDEPENDENT TESTING AGENCY.

9. END RETAINER INSTALLATION SHALL COMPLY WITH SPECS INDICATED IN THIS DRAWING PLUS ANY BUILDING AND ZONING REGULATIONS PROVIDED BY THE JURISDICTION WHERE PERMIT IS APPLIED TO.

10. THIS FLORIDA APPROVAL DOCUMENTS PREPARED BY THE ENGINEER OF RECORD IS GENERIC AND DOES NOT PROVIDE INFORMATION FOR A SITE SPECIFIC PROJECT; i.e. WHERE THE SITE CONDITIONS DEVIATE FROM THE FLORIDA APPROVAL DOCUMENTS.

CONTRACTOR TO BE RESPONSIBLE FOR THE SELECTION, PURCHASE AND INSTALLATION INCLUDING LIFE SAFETY OF THIS PRODUCT, BASED ON THIS FLORIDA APPROVAL DOCUMENTS PROVIDED HE/SHE DOES NOT DEVIATE FROM THE CONDITIONS DETAILED ON THIS DOCUMENT. CONSTRUCTION SAFETY AT SITE IS THE CONTRACTOR'S RESPONSIBILITY.

THIS FLORIDA APPROVAL DOCUMENTS WILL BE CONSIDERED INVALID IF ALTERED BY ANY MEANS.

SITE SPECIFIC PROJECTS SHALL BE PREPARED BY A FLORIDA REGISTERED ENGINEER OR ARCHITECT WHICH WILL BECOME THE ENGINEER OF RECORD (E.O.R.) FOR THE PROJECT AND WHO WILL BE RESPONSIBLE FOR THE PROPER USE OF THE FLORIDA APPROVAL DOCUMENTS ENGINEER OF RECORD, ACTING AS A DELEGATED ENGINEER TO THE FLORIDA APPROVAL DOCUMENTS ENGINEER, SHALL SUBMIT TO THIS LATTER THE SITE SPECIFIC DRAWINGS FOR REVIEW.

THIS FLORIDA APPROVAL DOCUMENTS SHALL BEAR THE DATE AND ORIGINAL SEAL AND SIGNATURE OF THE PROFESSIONAL ENGINEER OF RECORD THAT PREPARED IT.

11. THESE FLORIDA APPROVAL DOCUMENTS IN COMPLY WITH CHAPTER 61G15-36 OF THE FLORIDA ADMINISTRATION CODE.

12. AN ORIGINAL SIGNED AND SEALED COMPANY LETTER FROM ROLLINGSHIELD INC. IS REQUIRED, PROVING THAT THE 40mm, 55mm & 60mm END RETAINER ROLL-DOWN SHUTTER WAS PURCHASED FROM THEM IN ORDER FOR THIS NOA TO BE VALID ON ANY JOB.

40mm, 55mm & 60mm END RETAINER ROLL-DOWN SHUTTER

ROLLINGSHIELD (MEMBER OF N.S.A.)
 PHONE (305) 436-6661 FAX (305) 820-8225
 2500 N.W. 74TH AVENUE
 MIAMI, FLORIDA 33122
 www.rollingshield.com

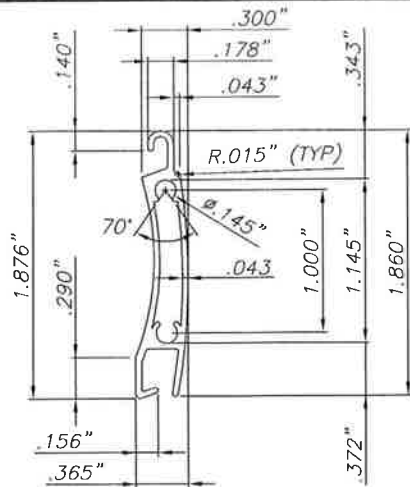
| REV. No | DESCRIPTION | DATE |
|---------|---------------------------------|-----------|
| 1 | RENEWAL AS PER FBC EDITION 2010 | 4-17-2012 |
| 2 | | |
| 3 | | |
| 4 | | |

V.M. Engineering Inc.
 C. of A. No. 27633
 11278 S.W. 153rd Place
 MIAMI, FLORIDA 33196
 TEL: 786-281-6888
 TEL: 305-383-5896

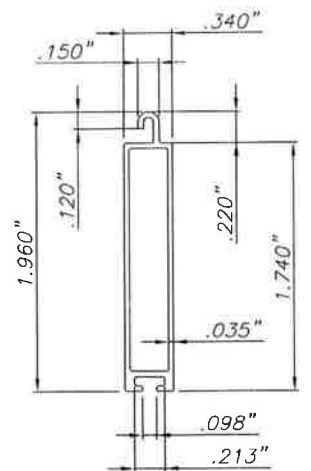
MORGAN VILLANUEVA
 License No 60292
 STATE OF FLORIDA
 PROFESSIONAL ENGINEER

SCALE: AS SHOWN
 DATE: 4-17-2012
F.B.C.
 (Non High Velocity Hurricane Zone)

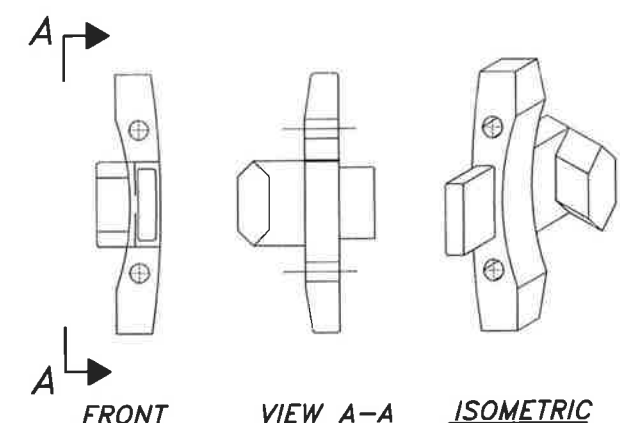
DWG No: **08-2012**
 SHEET **1 OF 8**



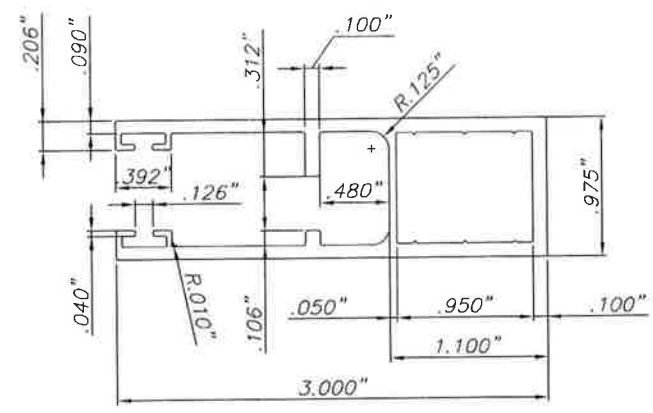
(A) TYPE 1 SLAT:
EXTRUDED ALUMINUM
40mm SLAT



(B) TYPE 2 SLAT:
EXTRUDED ALUMINUM
BOTTOM 40mm SLAT

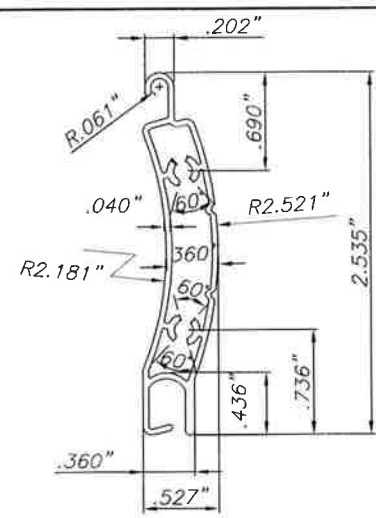


(C) NYLON END RETAINER CAP
ONE AT EACH END OF EVERY OTHER
SLAT, EACH FASTENED WITH TWO No.
8 BY 1 1/4" PAN HEAD S.D.S
FOR 40MM SLAT

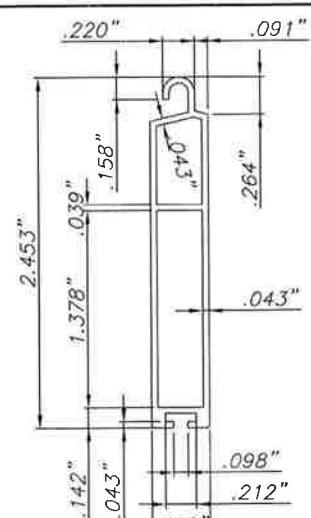


(D) SIDE RAIL TYPE 1
EXTRUDED ALUMINUM
FOR 40mm SLAT

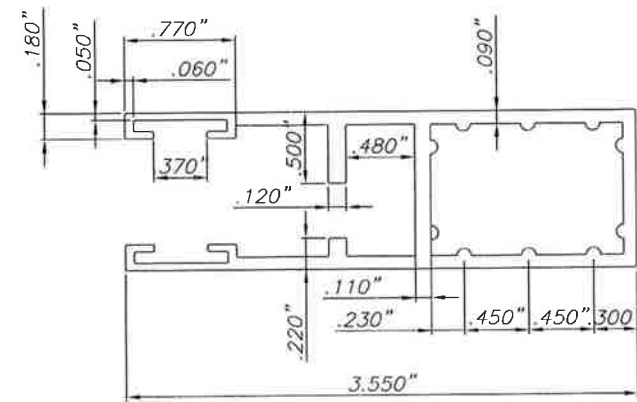
**COMPONENTS
FOR 40mm**



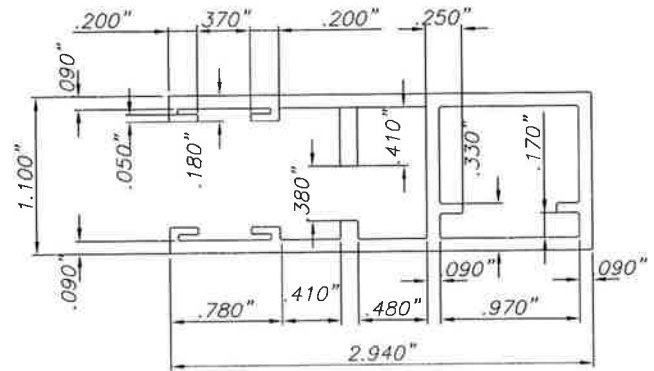
(G) TYPE 3 SLAT
EXTRUDED ALUMINUM
55mm SLAT



(H) TYPE 3 SLAT:
EXTRUDED ALUMINUM
BOTTOM 55mm SLAT

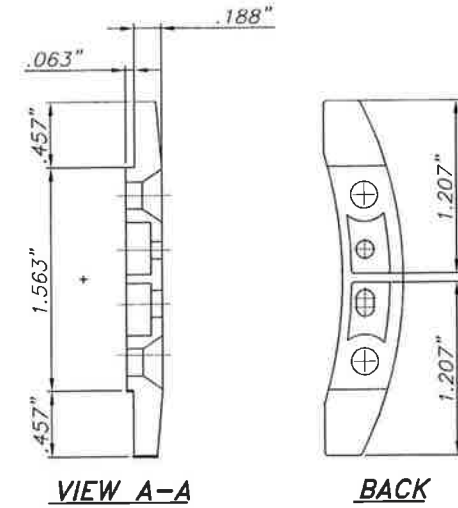
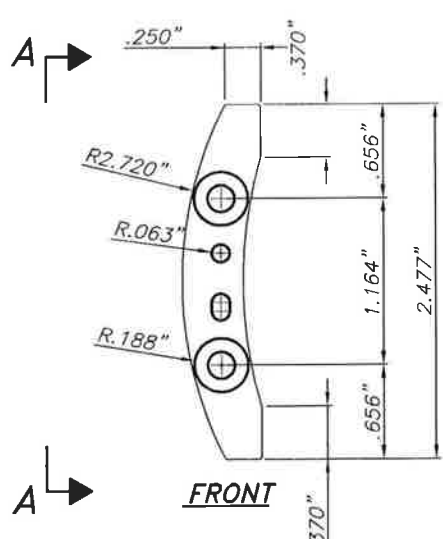


(I) SIDE RAIL TYPE 2
EXTRUDED ALUMINUM
SIDE RAIL 55mm SLAT

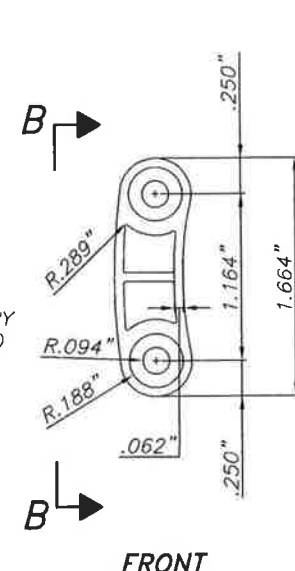


(J) SIDE RAIL TYPE 3
EXTRUDED ALUMINUM
SIDE RAIL 55mm SLAT

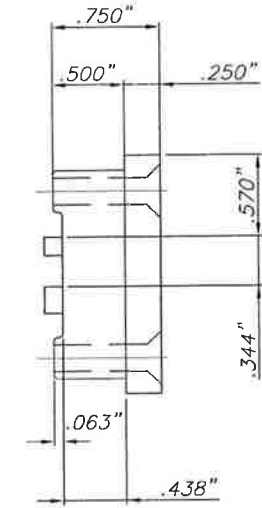
**COMPONENTS
FOR 55mm**



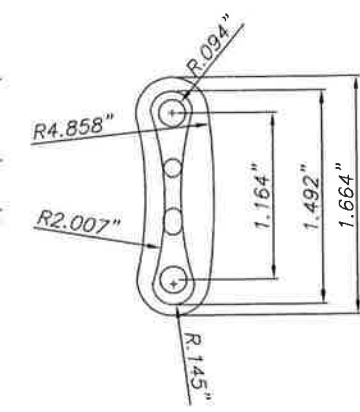
(K) NYLON END RETAINER CAP
TWO NYLON RETAINER CLIPS FORMING
ONE PIECE. ONE AT EACH END OF EVERY
OTHER SLAT, EACH FASTENED WITH TWO
No. 6 BY 2" PAN HEAD S.D.S
FOR 55MM SLAT



FRONT



VIEW B-B



BACK

NOT FOR USE WITHIN HIGH VELOCITY HURRICANE ZONE

40mm, 55mm & 60mm END RETAINER
ROLL-DOWN SHUTTER

ROLLINGSHIELD (MEMBER OF N.S.A.)
PHONE (305) 436-6661 FAX (305) 820-8225
2500 N.W. 74TH AVENUE
MIAMI, FLORIDA 33122
www.rollingshield.com

| REV. No | DESCRIPTION | DATE |
|---------|---------------------------------|-----------|
| 1 | RENEWAL AS PER FBC EDITION 2010 | 4-17-2012 |
| 2 | | |
| 3 | | |
| 4 | | |

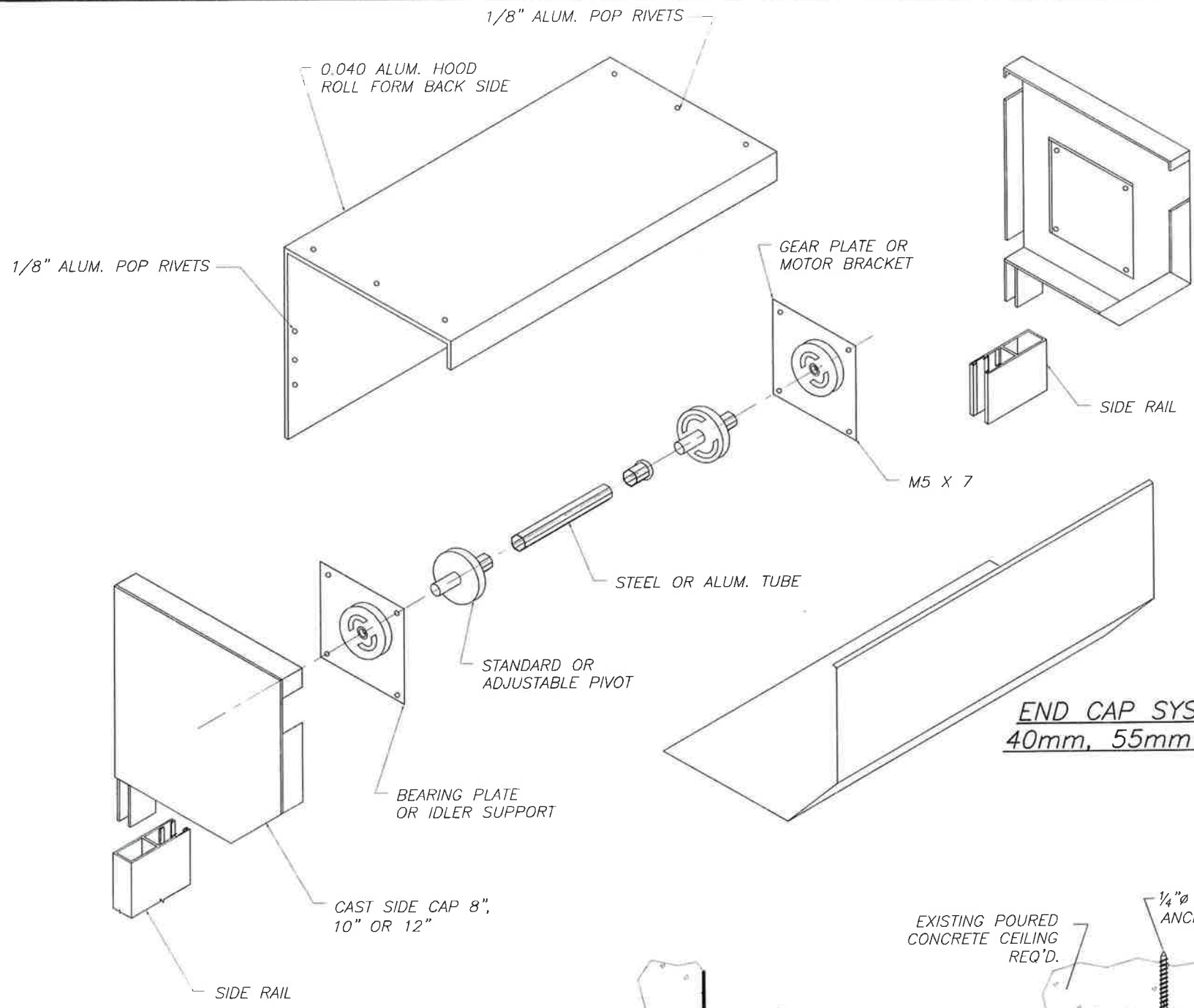
V.M. Engineering Inc.
C. of A. No. 27633
11278 S.W. 153rd Place
MIAMI, FLORIDA 33196
TEL: 786-281-6968
TEL: 305-383-5896

MORGAN VILLANUEVA
LICENSE
No. 80282
STATE OF
FLORIDA
PROFESSIONAL ENGINEER

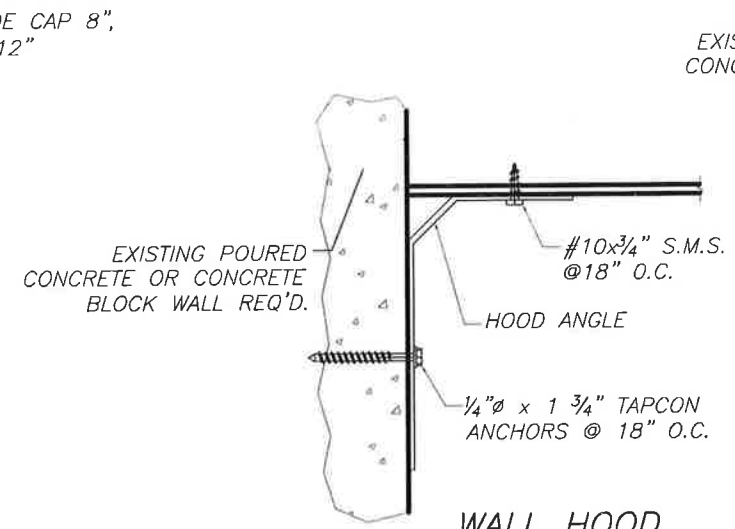
SCALE: AS SHOWN
DATE: 4-17-2012

F.B.C.
(Non High Velocity Hurricane Zone)

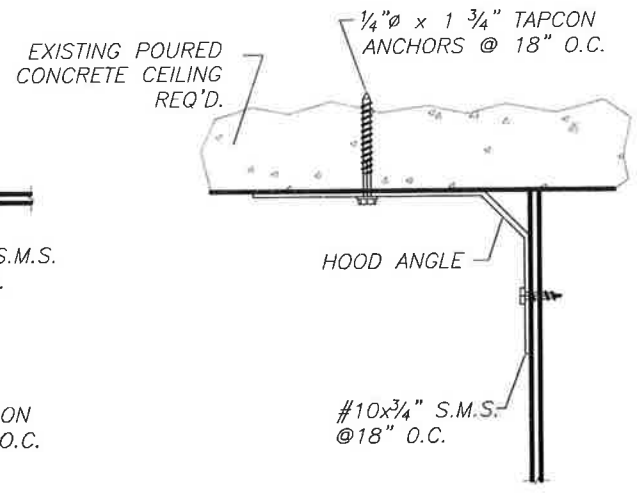
DWG No: 08-2012
SHEET 2 OF 8



**END CAP SYSTEM FOR
40mm, 55mm & 60mm**

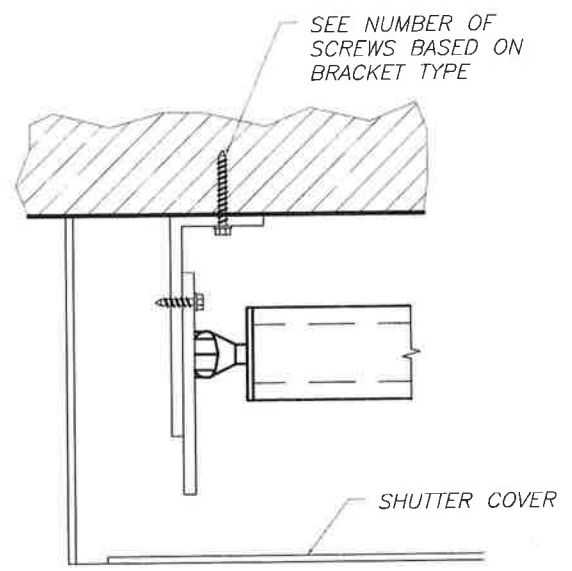


**WALL HOOD
ATTACHMENT**



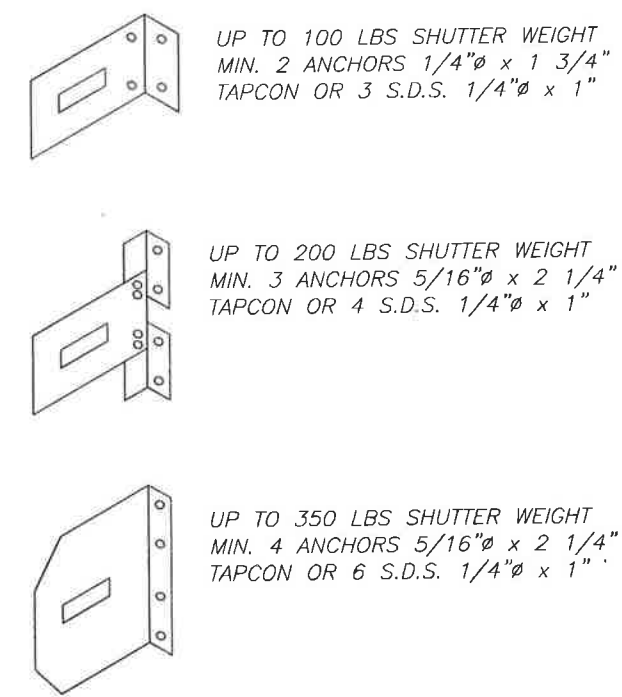
**CEILING HOOD
ATTACHMENT**

CUSTOM HOOD ATTACHMENT DETAIL



WALL INSTALLATION

BRACKET SYSTEM



NOT FOR USE WITHIN HIGH VELOCITY HURRICANE ZONE

**40mm, 55mm & 60mm END RETAINER
ROLL-DOWN SHUTTER**

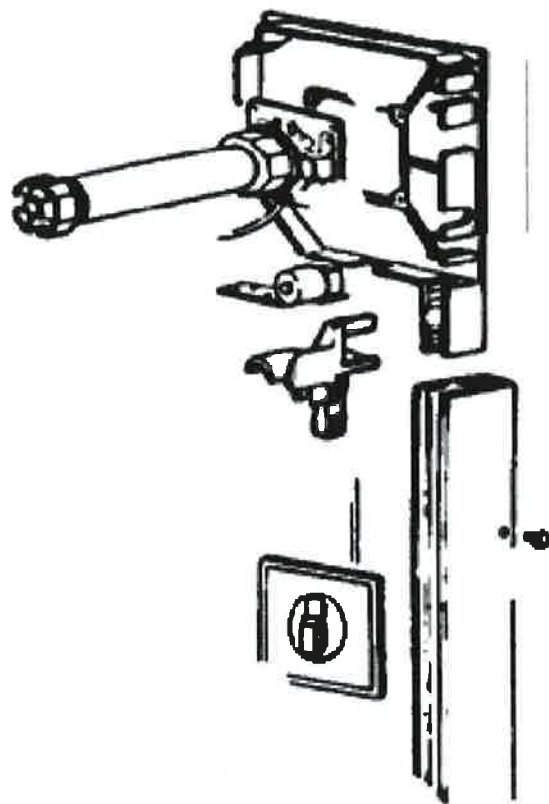
ROLLINGSHIELD (MEMBER OF N.S.A.)
 PHONE (305) 436-6661 FAX (305) 820-8225
 2500 N.W. 74TH AVENUE
 MIAMI, FLORIDA 33122
 www.rollingshield.com

| REV. No | DESCRIPTION | DATE |
|---------|---------------------------------|-----------|
| 1 | RENEWAL AS PER FBC EDITION 2010 | 4-17-2012 |
| 2 | | |
| 3 | | |
| 4 | | |

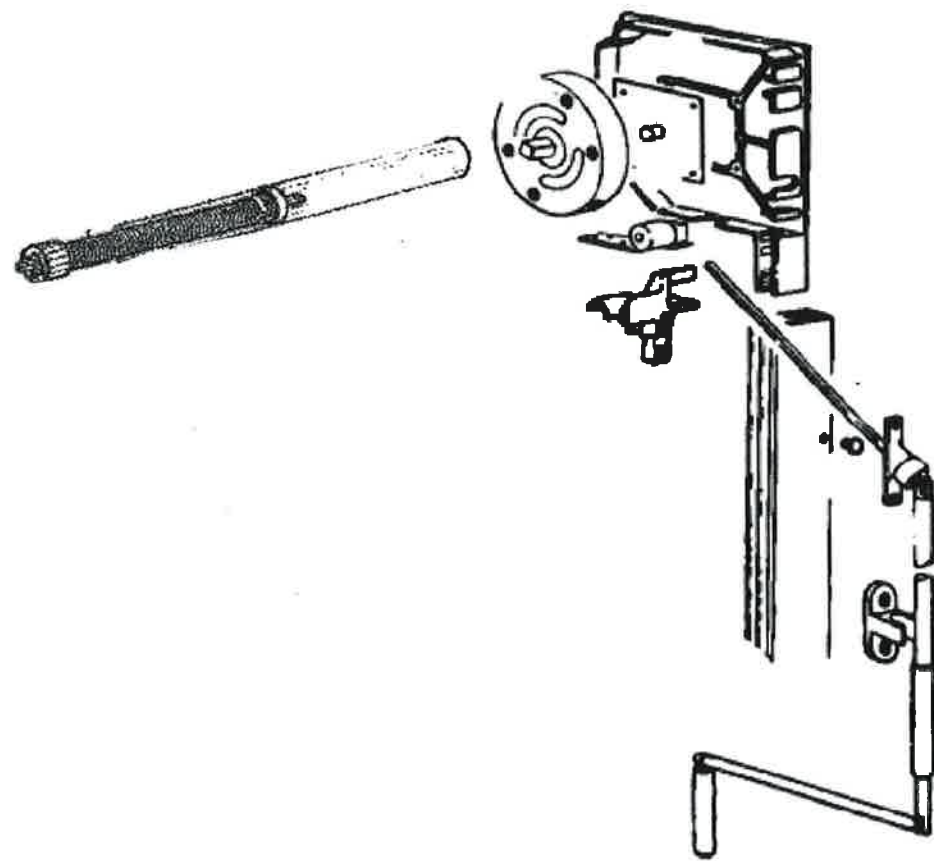
V.M. Engineering Inc.
 C. of A. No. 27633
 11278 S.W. 153rd Place
 MIAMI, FLORIDA 33196
 TEL: 786-281-6968
 TEL: 305-363-5896

MORGAN VILLANUEVA
 LICENSE
 No. 60292
 STATE OF FLORIDA
 PROFESSIONAL ENGINEER

| | |
|------------------------------------|-----------|
| SCALE: | AS SHOWN |
| DATE: | 4-17-2012 |
| F.B.C. | |
| (Non High Velocity Hurricane Zone) | |
| DWG No: | 08-2012 |
| SHEET | 4 OF 8 |



MOTORIZED ROLL-UP SHUTTER SYSTEM



HAND CRANK ROLL-UP SHUTTER SYSTEM

ALTERNATE ROLL-UP SHUTTER LIFTING MECHANISMS

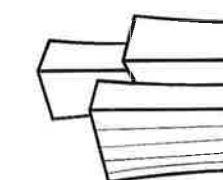
NOT FOR USE WITHIN HIGH VELOCITY HURRICANE ZONE

40mm, 55mm & 60mm END RETAINER
ROLL-DOWN SHUTTER

ROLLINGSHIELD (MEMBER OF N.S.A.)

PHONE (305) 436-6661 FAX (305) 820-8225
2500 N.W. 74TH AVENUE
MIAMI, FLORIDA 331222
www.rollingshield.com

| REV. No | DESCRIPTION | DATE |
|---------|---------------------------------|-----------|
| 1 | RENEWAL AS PER FBC EDITION 2010 | 4-17-2012 |
| 2 | | |
| 3 | | |
| 4 | | |



V.M.
Engineering Inc.
C. of A. No. 27633
11278 S.W. 153rd Place
MIAMI, FLORIDA 33196
TEL: 786-281-6968
TEL: 305-383-5896



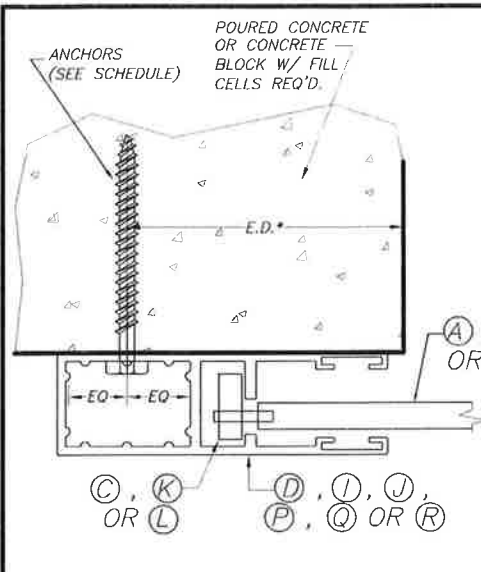
SCALE: AS SHOWN
DATE: 4-17-2012

F.B.C.

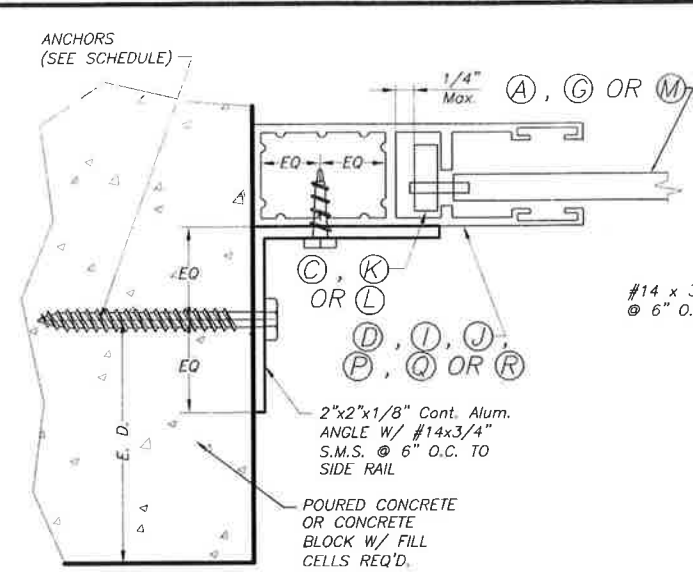
(Non High Velocity Hurricane Zone)

DWG No: 08-2012

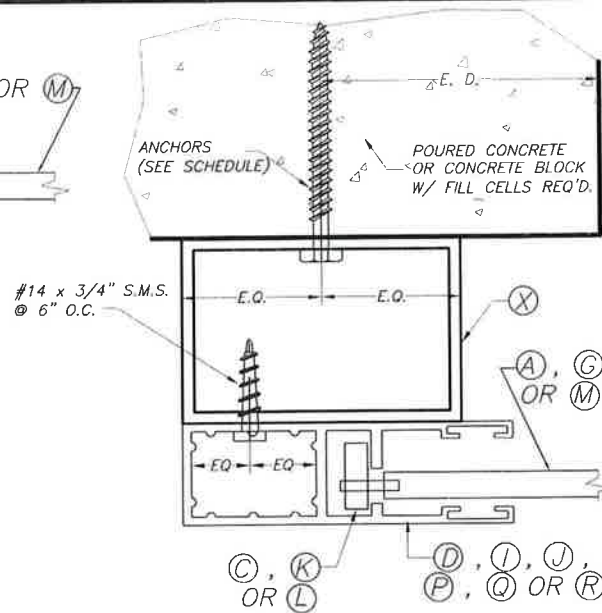
SHEET 5 OF 8



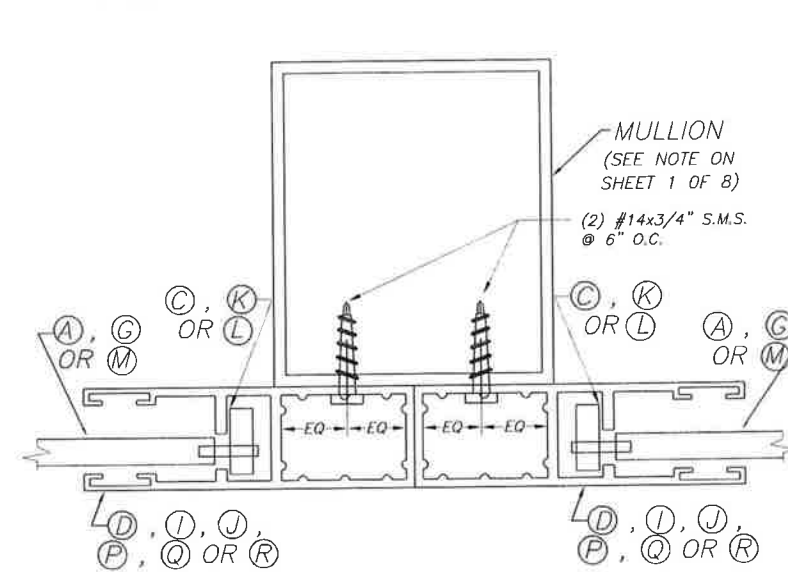
SECTION A-A : WALL MOUNT



SECTION A-A: INSIDE MOUNT



SECTION B-B: BUILD-OUT MOUNT



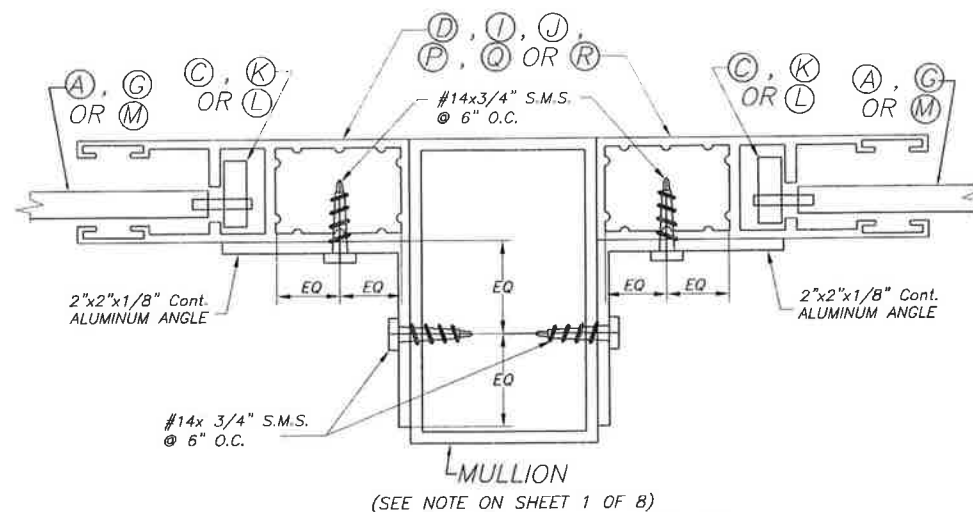
SECTION C-C: MULLION MOUNT
FACE MOUNT

SIDE RAIL ANCHOR SCHEDULE MAXIMUM DESIGN PRESSURE RATING "W" (p.s.f.) AND CORRESPONDING MAXIMUM ANCHOR SPACING (in) * FOR SIDE RAILS (D, I, J, P, Q & R) CONNECTIONS TO CONCRETE BLOCK OR POURED CONCRETE
(USE NEGATIVE PRESSURE VALUES AS PER ASCE 7-10)

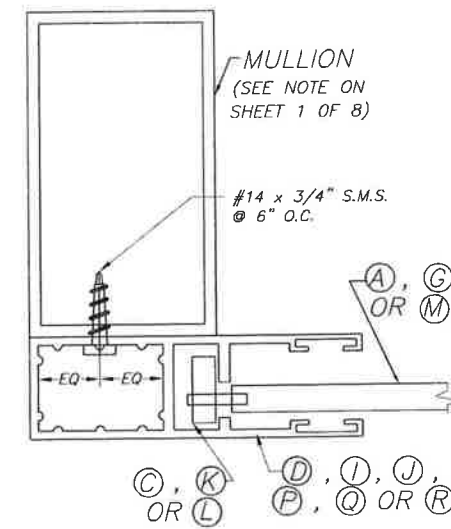
| MAXIMUM DESIGN LOAD "W" (p.s.f.) (ULTIMATE) | SIDE RAIL (D) USE ONLY 1/4" TAPCONS ANCHORS W/ 1 3/4" MIN. EMBEDMENT FOR MIN. E.D. SEE NOTES BELOW FOR 40mm SLAT ONLY | | | SIDE RAIL (I) USE ONLY 1/4" TAPCONS ANCHORS W/ 1 3/4" MIN. EMBEDMENT FOR MIN. E.D. SEE NOTES BELOW FOR 55mm SLAT ONLY | | | SIDE RAIL (J) USE ONLY 1/4" TAPCONS ANCHORS W/ 1 3/4" MIN. EMBEDMENT FOR MIN. E.D. SEE NOTES BELOW FOR 55mm SLAT ONLY | | | SIDE RAIL (P) USE ONLY 3/16" TAPCONS ANCHORS W/ 1 3/4" MIN. EMBEDMENT FOR MIN. E.D. SEE NOTES BELOW FOR 60mm SLAT ONLY | | | SIDE RAIL (Q) USE ONLY 3/16" TAPCONS ANCHORS W/ 1 3/4" MIN. EMBEDMENT FOR MIN. E.D. SEE NOTES BELOW FOR 60mm SLAT ONLY | | | SIDE RAIL (R) USE ONLY 3/16" TAPCONS ANCHORS W/ 1 3/4" MIN. EMBEDMENT FOR MIN. E.D. SEE NOTES BELOW FOR 60mm SLAT ONLY | | |
|---|---|--------------|-----------------|---|--------------|-----------------|---|--------------|-----------------|--|--------------|-----------------|--|--------------|-----------------|--|--------------|-----------------|
| | WALL MOUNT | INSIDE MOUNT | BUILD-OUT MOUNT | WALL MOUNT | INSIDE MOUNT | BUILD-OUT MOUNT | WALL MOUNT | INSIDE MOUNT | BUILD-OUT MOUNT | WALL MOUNT | INSIDE MOUNT | BUILD-OUT MOUNT | WALL MOUNT | INSIDE MOUNT | BUILD-OUT MOUNT | WALL MOUNT | INSIDE MOUNT | BUILD-OUT MOUNT |
| 50 OR LESS | 6" | 6" | 6" | 6" | 6" | 6" | 6" | 6" | 6" | 6" | 6" | 6" | 6" | 6" | 6" | 6" | 6" | 6" |
| >50 TO 116 | 6" | 6" | 6" | 6" | 6" | 6" | 6" | 6" | 6" | 6" | 6" | 6" | 6" | 6" | 6" | 6" | 6" | 6" |
| >116 TO 166 | - | - | - | - | - | - | - | - | 6" | 6" | 6" | 6" | 6" | 6" | 6" | 6" | 6" | 6" |
| >166 TO 216 | - | - | - | - | - | - | - | - | 6" | 6" | 6" | 6" | 6" | 6" | 6" | 6" | 6" | 6" |

MAXIMUM ANCHOR SPACING FOR TAPCON, MAXI-SET TAPCONS OR CRETE-FLEX SS4 ARE VALID FOR 3 1/2" EDGE DISTANCE. FOR EDGE DISTANCE LESS THAN 3 1/2", REDUCE ANCHOR SPACING BY MULTIPLYING SPACING GIVEN ON SCHEDULE BY THE BELLOW FACTORS. THE MINIMUM ANCHOR SPACING FOR TAPCON, MAXI-SET TAPCONS OR CRETE-FLEX SS4 IS 3" O.C.

| EXISTING E. D. | FACTOR |
|----------------|--------|
| 3" | .90 |
| 2 1/2" | .75 |
| 2" | .50 |



SECTION C-C: MULLION MOUNT
(INSIDE MOUNT)



SECTION C-C: MULLION MOUNT
(FACE MOUNT)

NOT FOR USE WITHIN HIGH VELOCITY HURRICANE ZONE

40mm, 55mm & 60mm END RETAINER
ROLL-DOWN SHUTTER

ROLLINGSIELD (MEMBER OF N.S.A.)
PHONE (305) 436-6661 FAX (305) 820-8225
2500 N.W. 74TH AVENUE
MIAMI, FLORIDA 33122
www.rollingsield.com

| REV. No | DESCRIPTION | DATE |
|---------|---------------------------------|-----------|
| 1 | RENEWAL AS PER FBC EDITION 2010 | 4-17-2012 |
| 2 | | |
| 3 | | |
| 4 | | |

V.M. Engineering Inc.
C. of A. No. 27633
11278 S.W. 153rd Place
MIAMI, FLORIDA 33196
TEL: 786-281-6968
TEL: 305-383-5896

MORGAN VILLANUEVA
LICENSE
No 80202
STATE OF
FLORIDA
PROFESSIONAL ENGINEER
STRUCTURAL ENGINEER

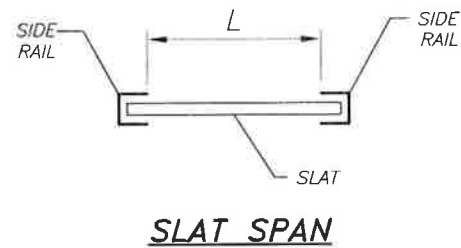
SCALE: AS SHOWN
DATE: 4-17-2012
F.B.C.
(Non High Velocity Hurricane Zone)
DWG No: 08-2012
SHEET 6 OF 8

**MAXIMUM NEGATIVE DESIGN PRESSURE RATING "W"
(p.s.f.) AND CORRESPONDING MAXIMUM SLAT SPAN
"L" FOR 40mm, 55mm & 60mm SLATS**

(USE NEGATIVE PRESSURE VALUES AS PER ASCE 7-10)

| SLAT TYPE | Max. DESIGN LOAD "W" (p.s.f.) (ULTIMATE) | MAXIMUM SLAT SPAN | MINIMUM SEPARATION TO GLASS (in) |
|-----------|--|-------------------|----------------------------------|
| 40mm | 116.0 OR LESS | 11'-6" | 10.00 |
| 55mm | 116.0 OR LESS | 19'- 3 1/2" | 17.85 |
| 60mm | 66 OR LESS | 19'- 3 1/2" | 16.13 |
| 60mm | 75.0 | 18'- 8" | 15.67 |
| 60mm | 83.0 | 18'- 2" | 15.25 |
| 60mm | 91.0 | 17'- 8" | 14.67 |
| 60mm | 100.0 | 17'- 2" | 13.95 |
| 60mm | 108.0 | 16'- 8" | 13.13 |
| 60mm | 116.0 | 16'- 4" | 13.07 |
| 60mm | 125.0 | 16'- 0" | 12.95 |
| 60mm | 133.0 | 15'- 8" | 12.75 |
| 60mm | 141.0 | 15'- 4" | 12.45 |
| 60mm | 150.0 | 15'- 0" | 12.13 |
| 60mm | 158.0 | 14'- 8" | 11.75 |
| 60mm | 166.0 | 14'- 4" | 11.30 |
| 60mm | 175.0 | 14'- 0" | 10.85 |
| 60mm | 183.0 | 13'- 8" | 10.37 |
| 60mm | 191.0 | 13'- 4" | 9.84 |
| 60mm | 200.0 | 13'- 0" | 9.32 |
| 60mm | 208.0 | 12'- 8" | 8.79 |
| 60mm | 216.0 | 12'- 5" | 8.47 |

NOTE: TO OBTAIN ALLOWABLE PRESSURE MULTIPLY THE ULTIMATE PRESSURE BY 0.6 FACTOR



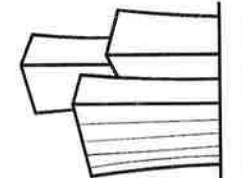
NOT FOR USE WITHIN HIGH VELOCITY HURRICANE ZONE

40mm, 55mm & 60mm END RETAINER
ROLL-DOWN SHUTTER

ROLLINGSHIELD (MEMBER OF N.S.A.)

PHONE (305) 436-6661 FAX (305) 820-8225
2500 N.W. 74TH AVENUE
MIAMI, FLORIDA 33122
www.rollingshield.com

| REV. No | DESCRIPTION | DATE |
|---------|---------------------------------|-----------|
| 1 | RENEWAL AS PER FBC EDITION 2010 | 4-17-2012 |
| 2 | | |
| 3 | | |
| 4 | | |



V.M. Engineering Inc.
C. of A. No. 27633
11278 S.W. 153rd Place
MIAMI, FLORIDA 33196
TEL: 786-281-6968
TEL: 305-383-5896



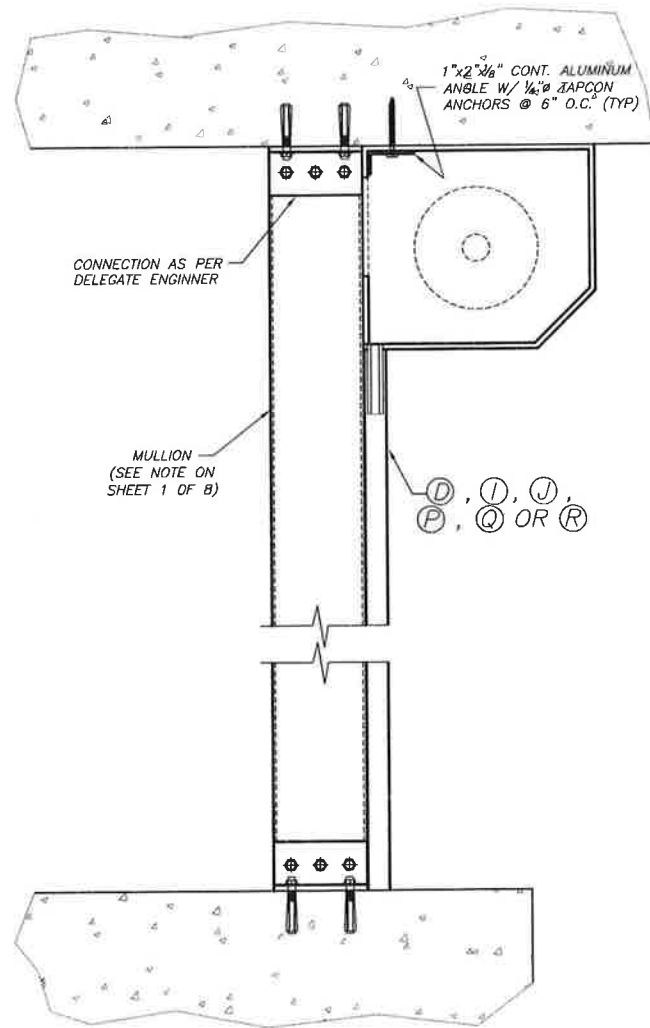
SCALE: AS SHOWN
DATE: 4-17-2012

F.B.C.

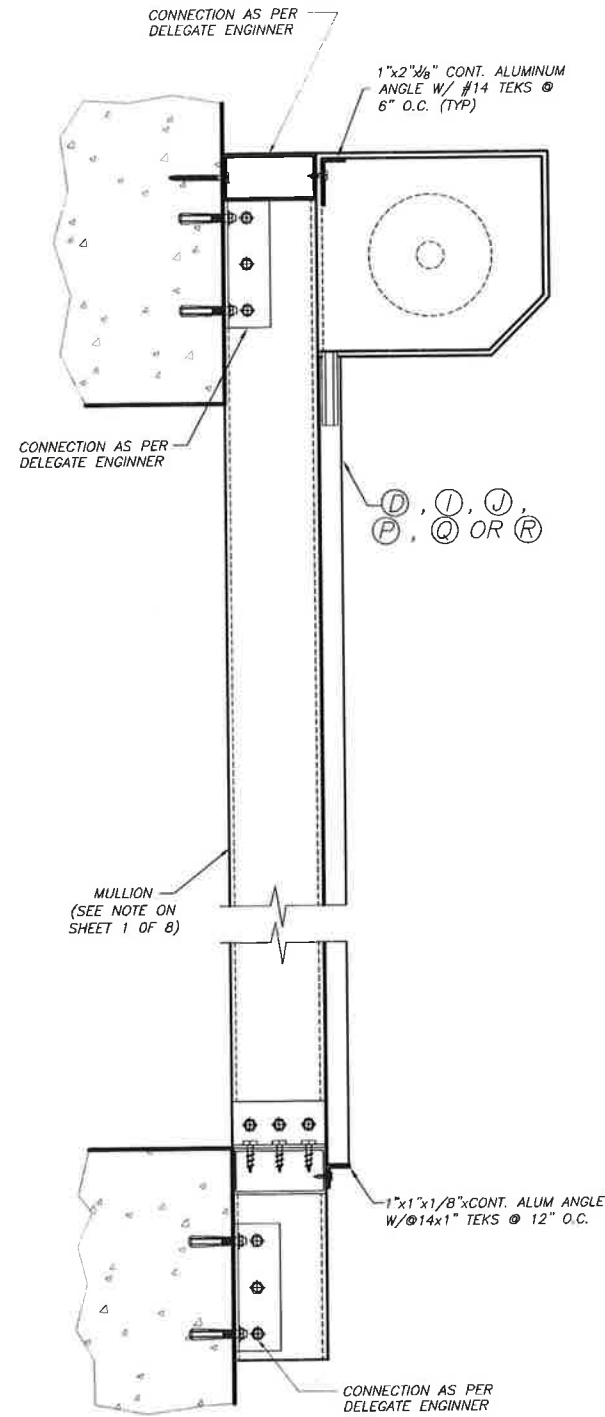
(Non High Velocity Hurricane Zone)

DWG No: 08-2012

SHEET 7 OF 8



FLOOR/CEILING MOUNTING
MULLION CONNECTION



WALL MOUNTING MULLION
CONNECTION AT TOP & BOTTOM

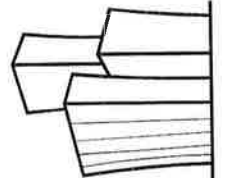
NOT FOR USE WITHIN HIGH VELOCITY HURRICANE ZONE

40mm, 55mm & 60mm END RETAINER
ROLL-DOWN SHUTTER

ROLLINGSHIELD (MEMBER OF N.S.A.)

PHONE (305) 436-6661 FAX (305) 820-8225
2500 N.W. 74TH AVENUE
MIAMI, FLORIDA 33122
www.rollingshield.com

| REV. No | DESCRIPTION | DATE |
|---------|---------------------------------|-----------|
| 1 | RENEWAL AS PER FBC EDITION 2010 | 4-17-2012 |
| 2 | | |
| 3 | | |
| 4 | | |



V.M.
Engineering Inc.
C. of A. No. 27633
11278 S.W. 153rd Place
MIAMI, FLORIDA 33196
TEL: 786-281-6968
TEL: 305-383-5886



SCALE: AS SHOWN
DATE: 4-17-2012

F.B.C.

(Non High Velocity Hurricane Zone)

DWG No: 08-2012

SHEET 8 OF 8